



G35S-7 / G40S-7 / G45S-7 / G50C-7 / G55C-7  
G40SC-7 / G45SC-7 / G50SC-7 / G55SC-7

## 7 SERIES FORKLIFTS

**Pneumatic LP 8,000 to 12,000lb capacity  
(3.5 to 5.5 ton)**



# Leading the way

The new world class 7 Series trucks from Doosan

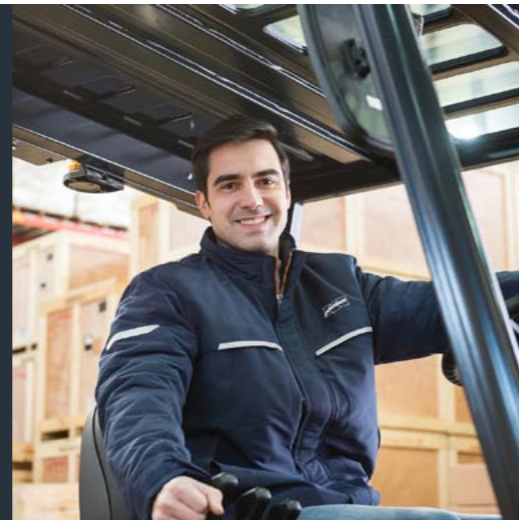
The new 7 Series of counterbalance forklift trucks, continue to follow the core Doosan tradition of delivering simple, powerful performance, whilst most of all, delivering the best possible value for our customers.

The specially designed ergonomic operator compartment keeps the operator in complete control at all times, improving productivity and reducing stress and fatigue. The new model offers improved visibility and the latest design in ergonomic hydraulic controls. Thanks to an improved durable design and an additional stability system, Doosan's new 7 Series trucks exceed the highest demands for safe operation.

Extended maintenance intervals and advanced technology components reduce the overall cost of maintenance. The latest engine provides an unbeatable combination of power, performance and reliability. Each parameter is fully adjustable to perfectly match every your individual requirement, providing maximum control and accuracy for every function.

“ Higher lifting and travel speed helps me to complete my job efficiently ”

- PRODUCTIVITY**
- Efficient performance
  - Optimized steering angle
  - Excellent visibility



“ The Doosan service support network has never let me down ”

**SERVICEABILITY**

- Doosan service network coverage
- Quick service response
- Easy to fix design



“ The robustness of the Doosan truck gets the toughest of jobs done ”

- SAFETY AND ERGONOMICS**
- Auto parking brake
  - Operator Sensing System(OSS)
  - New designed operator cell
  - New Instrument Panel



## Features overview

Power, excellent performance, driving comfort, durability, and outstanding fuel efficiency will certainly satisfy you.

### PRODUCTIVITY GAINS

- High visibility design
- Reliable operation
- ODB - Oil cooled disc brakes
- Electric Controlled TCI(Turbo Charged Intercooler) Doosan Engines
- Higher operator cell (Optional)

### BETTER SERVICEABILITY

- Worldwide service network
- Doosan genuine parts
- Easy to access controller room
- 4G Display
- Diagnostics tool
- Wide hood open



### ENHANCED SAFETY & ERGONOMICS

- Direction Lever Function
- Mast Lowering Interlock
- Operation Sensing System (OSS)
- LED lights (Optional)
- Rear grab handle with horn (Optional)
- Emergency switch

### ADDITIONAL FEATURES

- Eco mode
- Adjustable column
- Adjustable seat
- Convenience package (Optional)



## PERFORMANCE



# Productivity gains



### KUBOTA 3.8L (69kW)

Superior engine performance is driven by an ECU that intergrates and coordinates all critical functions including: governor, variable ignition timing, air-fuel ratio control and engine protection.

#### Improved Fuel consumption

By using roller valve lifters for reduced friction and improved fuel economy

#### Increased Durability

By Nodular iron crankshaft has undercut & rolled fillets

#### Excellent engine performance

The torque performance is excellent in the main work area (1600rpm or less)



#### ODB (Oil cooled Disk Brake)

There are 3 to 5 double slided discs per wheel. Discs are submerged in oil, keeping them cool and limiting wear. The Doosan ODB system is completely enclosed and sealed from outside contaminants protecting the inner workings of the brake system from dirt, water, shrink wrap and broken pallets

#### Well proven and reliable KUBOTA engines and components

The powerful KUBOTA engine and components provides high-end torque at low engine rpm, reduced fuel consumption. KUBOTA engine delivers great performance and reliability.

#### Multi-engine performance mapping system

Doosan offers 2 performance engine maps, which gives you the choice between STD mode and Eco mode. Eco mode limits engine performance but can reduce the fuel consumption by approximately 9%.

## Enhanced safety features



### Tilt Cylinder Cover

Not only protects tilt cylinders from unexpected shock but provides the space for placing operator's foot.



### Easy Entry Grab Bar and Anti Slip Step Plate

Enables easy entry and exit. Also wide anti slip step plates keeps operator's safety in any weather condition.



### Large panoramic mirror (Optional)

Provides the operator a clear view of the rear working area, improving working safety & efficiently.



### LED lights (Optional)

Brighter and last longer than traditional sealed beams or halogen lights



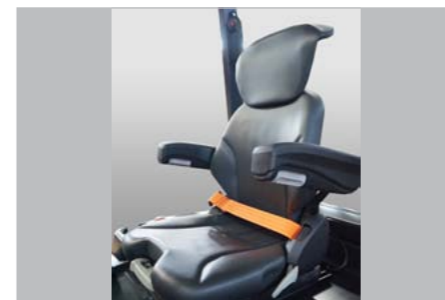
### Fully Adjustable Operator's Space

Designed with a low-profile mechanical suspension that significantly reduces vibrations, it helps operator stay comfortable, no matter how rough the day gets.



### Rear grab handle with horn (Optional)

The horn button on the rear assist grab bar enhances the comfort and safety while traveling in reverse by allowing the operator to sound the horn and still maintain full control of the vehicle.



### Premium Seat (Optional)

Designed with a low-profile mechanical suspension that significantly reduces vibrations, it helps operator stay comfortable, no matter how rough the day gets.



### Locking type gas spring for Hood

Improve operator's safety and convenience with locking function.



# Better serviceability



## Worldwide service network

- Head quarter
- Overseas offices and service centers



Doosan provides high-quality support, relying on its extensive dealer network. No matter where you are located, highly-skilled professionals are always ready to help you, guaranteeing maximum uptime.



## Doosan Genuine Parts

The parts warehouse, supplies high quality Doosan parts to the dealer network.



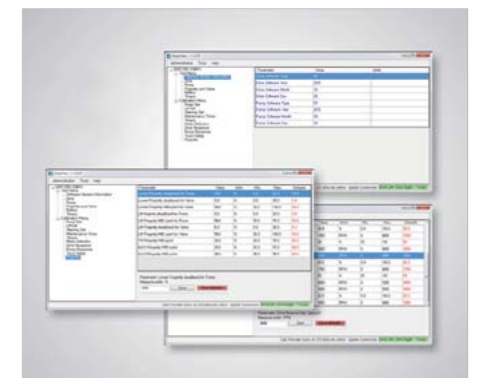
## Easy to access

Integrated Electrical Components.  
Wide hood opening range for bestaccessibility.  
Tool-less floor plate.  
Great location of fuel filter for serviceability.



## Easy to Service

Optimized location to service :  
- Battery, air cleaner, filters, dipstick guages  
- Integration of fuses and relays



## 4G Display

To examine the forklift and set the program with notebook only (without a special tool)

## Additional features



### Excellent visibility

The precise designed overhead guard profile with angled roof bars provide a clear view upwards whilst ensuring ultimate strength for safety.



### Easy to Read Display

Integration of all indicators and speedometer keeps operator ever aware of all vehicle conditions quickly and easily.



### Swing out and down LP Cradle - Single / Dual

Standard swing out and down LP cradle frees the LPG tank from over the counterweight and lowers the tank on a stable platform to minimize arm and back strain for even simplifies tank installation and removal.



### Multi Engine Map : Standard Mode / Eco Mode

We provide two engine settings - STD mode and ECO mode.

Each customer can choose their own setting to suit their different applications.



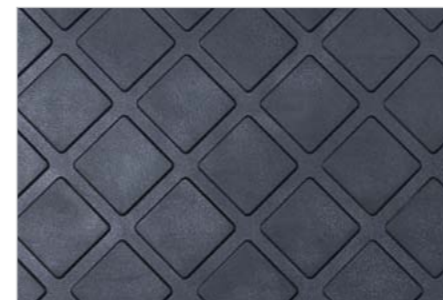
### Improvement for Pedal System

- Linkage Type and Organ Type Pedal
- Applied anti-slipped Pad / Advanced style



### New Air Cleaner

The increased capacity of the Dual Element Air Filters makes the new 7-series more durable. The integrated MAF sensor (Mass Air Flow) provides exact monitoring and is easy to access.



### Advanced Floor Mat

- Mat thickness increase
- Improvement of gap by applying 3D molding method



### OSS (Operator Sensing System)

Whenever the operator leaves the seat, the truck travel and mast lifting functions will stop. This system avoids any unintended forklift movements when the operator is not seated.



### Applied Tilting Roof (Optional)

Ventilation





**ALL-ROUND PLAYER  
IN THE VARIOUS APPLICATION**



## The best proposal for every application

Doosan can provide you with the best proposal for your operation, from internal combustion forklifts to electric warehouse equipments and much more. Please contact Doosan to discuss your needs.

- A** Chemical factory
- B** Steel factory
- C** Foundry
- D** Construction site
- E** Paper factory
- F** Beverage warehouse
- G** Lumber factory
- H** Building material factory
- I** Food Processing factory
- J** Whole sale
- K** Cold storage warehouse
- L** Recycling site
- M** Automotive factory
- N** Warehouse
- O** Port
- P** Airport
- Q** Farm
- R** Fishery warehouse



# Main Specifications

MAJOR SPECIFICATION		G35S-7	G40S-7	G45S-7	G50C-7	G55C-7	G40SC-7	G45SC-7	G50SC-7	G55SC-7
Load Capacity	lb/kg	8,000 (3,500)	9,000 (4,000)	10,000 (4,500)	11,000(5,000)	12,000 (5,500)	9,000 (4,000)	10,000 (4,500)	11,000(5,000)	12,000 (5,500)
Load Center	inch/mm	24(600)	24(600)	24(600)	24(600)	24(600)	19.7(500)	19.7(500)	19.7(500)	19.7(500)
Load Distance: Center of Driveaxle to fork	inch/mm	22.1(561)	22.1(561)	22.1(561)	22.5(571)	22.5(571)	22.1(561)	22.1(561)	22.1(561)	22.5(571)
Wheelbase	inch/mm	78.7(2,000)	78.7(2,000)	82.7(2,100)	82.7(2,100)	82.7(2,100)	78.7(2,000)	78.7(2,000)	82.7(2,100)	82.7(2,100)
Height, Mast lowered	inch/mm	89(2,225)	90(2,230)	90(2,230)	95(2,380)	95(2,380)	89(2,225)	90(2,230)	90(2,230)	95(2,380)
Free Lift	inch/mm	6.3(160)	6.3(160)	6.3(160)	6.7(170)	6.7(170)	6.3(160)	6.3(160)	6.3(160)	6.7(170)
Lift	inch/mm	118.1(3,000)	118.1(3,000)	118.1(3,000)	120(3,050)	120(3,050)	118.1(3,000)	118.1(3,000)	118.1(3,000)	120(3,050)
Height, Mast Extended	inch/mm	167.9(4,265)	168.1(4,270)	174.0(4,420)	176.0(4,470)	176.0(4,470)	167.9(4,265)	168.1(4,270)	174.0(4,420)	176.0(4,470)
Height of Overhead Guard(Cabin)	inch/mm	87.6(2,225)	87.8(2,230)	87.8(2,230)	87.8(2,230)	87.8(2,230)	87.6(2,225)	87.8(2,230)	87.8(2,230)	87.8(2,230)
Height of Seat	inch/mm	49.1(1,248)	49.4(1,255)	49.4(1,255)	49.4(1,255)	49.4(1,255)	49.1(1,248)	49.4(1,255)	49.4(1,255)	49.4(1,255)
Overall Length	inch/mm	163.9(4165)	165.9(4215)	176.4(4480)	178.1(4525)	179.1(4550)	163.9(4165)	165.9(4215)	176.4(4480)	178.1(4525)
Length to Forkface	inch/mm	125(3,115)	127(3,165)	131(3,280)	133(3,325)	135(3,350)	125(3,115)	127(3,165)	131(3,280)	133(3,325)
Overall Width	inch/mm	54(1,370)	57(1,455)	57(1,455)	57(1,455)	57(1,455)	54(1,370)	57(1,455)	57(1,455)	57(1,455)
Fork Dimensions	inch/mm	2.0x5.9x41.3 (50x150x1,050)	2.0x5.9x41.3 (50x150x1,050)	2.0x5.9x47.2 (50x150x1,200)	2.4x5.9x47.2 (60x150x1,200)	2.4x5.9x47.2 (60x150x1,200)	2.0x5.9x41.3 (50x150x1,050)	2.0x5.9x41.3 (50x150x1,050)	2.0x5.9x47.2 (50x150x1,200)	2.4x5.9x47.2 (60x150x1,200)

# Standard Features and Optional Extras

SAFETY & STABILITY	OPERATOR COMFORT (ERGONOMIC)	PRODUCTIVITY	DURABILITY & SERVICEABILITY
Direction Lever Function	Adjustable Steering column	Electric Controlled TCI(Turbo Charged Intercooler) Doosan Engines	Electronic Control Units(ECU) Cover
Mast Lowering Interlock	Integrated Instrument Panel	Pedal Location(Accelerator, Brake and Inching)	Use waterproof connectors
Operation Sensing System	Easy to Service	Inching Pedal	Dual Element Air Cleaner
ELR Type Orange Seat Belt	- Integrated Electric Components (Relays and Fuses)	Rear Grab Bar(w/ Horn)	Full Floating Driveaxle(w/ ODB)
Engine Shut Down	- Tool-less Footplate		Pre-Cleaner
Combination Lamps(LED)	- Wide Hood Open Range		
Autoshift Controller	Full Cabin with Heater or Air-conditioner		
Emergency Switch	Rear View Camera		
Back-up buzzer	Seat - Suspension		
Swing Out and Down LP Cradle	Sound Suppression		
	Mono-Ped		
	Steering Knob		
	Cup hold		
	Cigar and Power Jack (12V)		

■ Standard features  
■ Optional extras

\* Remark : This list is based on factory data. Standard or optional can vary for specific countries.

# About Doosan

Values that drive our future growth

## Trust in people is the foundation on which Doosan has built its century of success

Doosan has always put 'People' first for the past 100 years, based on our management philosophies.- 'Business is not meant to make profits, but to help people grow.' (Late Too Pyung Park, First Chairman), and continues to spur corporate development with global competitiveness originated from human resources.

## Doosan the oldest, but fastest growing company

Doosan has recorded the longest business history since its inauguration in 1896, but has grown at its most rapid pace for the past 10 years.

## Doosan-the global Infrastructure Support Business (ISB) company

Doosan has created in excess of 90% of its sales within the ISB sector through vigorous reorganisation of its business portfolio since 1998. In the past, 70% of our business was concentrated on consumer goods, but we have successfully transformed our business DNA to the infrastructure support business that constructs and reinforces social infrastructure.

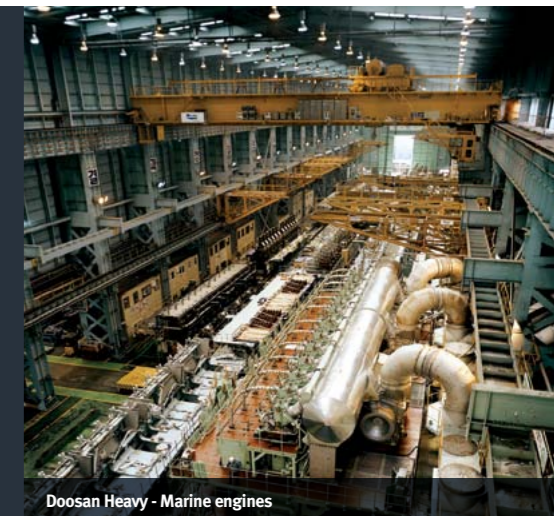
## Doosan, surging as a global company

Doosan has become the global ISB leader based on its world class products and services. In addition, as a true global company, Doosan's overseas employees encompass 50% of its human resources, and overseas sales take more than over 60% of the total sales.



Doosan Infracore - Construction equipment

**Committed To Our Customers**  
We are committed to our customers, providing superior products and excellent services to go with them into the future.



Doosan Heavy - Marine engines

**Committed To Innovation**  
We remain committed to the advancement of new technologies and development of talented individuals, positioning us to respond effectively to the rapid changes taking place in the 21<sup>st</sup> century. Our mission is to strengthen our global position and become the industry leader well into the future.



Doosan Bobcat - Skid loader (with Doosan engine)



**Doosan Way**  
The Doosan Way is our unique way of doing business; the philosophy and culture that will guide us to become the "Proud Global Doosan."






**Our Promise**  
Doosan will be the partner you can count on, always putting our commitment to you first.



Doosan Heavy - Seawater desalination plants



-  Production Subsidiary
-  Sales Subsidiary
-  Parts Depot Center

2019 Sep

Authorized Dealer



Doosan Corporation Industrial Vehicle  
Web site: [www.doosan-iv.com](http://www.doosan-iv.com)

